

## YA/L011A Life Size Human Skeleton Model

### Introduction:

This life size articulated adult Skeleton is 180cm tall & ideal for teaching the basics of human anatomy when intricate textural nuances of the bones are not required. The right side is with ligaments and the left side is with points of origin (red) and points of insertion (blue) of muscles.

**1, SKULL:** Illustrates suture lines, cut Calvarium to show the interior skull, movable jaw on springs, 3 extra lower teeth. The skull can be removed from the stand.

**2, VERTEBRAL COLUMN:** Consists of 7 Cervical Vertebrae, 12 Thoracic Vertebrae & 5 Lumbar vertebrae, Sacrum, Coccyx & Intervertebral Discs.

**3, THORACIC CAGE:** Consists of 24 ribs, Sternum & clear colored Costal Cartilage. Includes 7 pairs (I-VII) of True ribs, 3 pairs (VIII-X) of False ribs & 2 pairs (XI-XII) of Floating ribs.

**4, PELVIS:** Consists of Sacrum, Coccyx, Left Coxa bone & Right Coxa bone.

**5, UPPER EXTREMITIES:** Easily removable at the shoulder joints. Movable at the shoulder, elbow & wrist joints. Include Humerus, Ulna, & Radius bones. Scapula & Clavicle are fixed to the Thoracic cage. The hand bones are individually wired to allow for movement & include: Scaphoid, Lunate, Triquetrum, Pisiform, Trapezium, Trapezoid, Capitate, Hamate, Metacarpals & Phalanges bones.

**6, LOWER EXTREMITIES:** Easily removable at the hip joints. Movable at the hip, knee & ankle joints. Include Femur, Patella, Tibia & Fibula bones. The Feet bones are individually wired for movement & include: Calcaneus, Talus, Navicular, Cuboid, Medial Cuneiform, Intermediate Cuneiform, Lateral Cuneiform, Metatarsals & Phalanges bones.

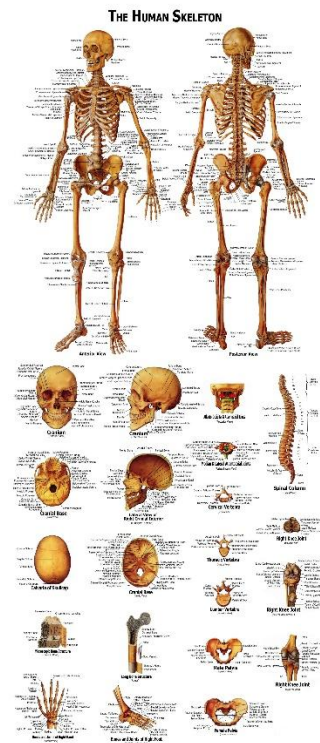
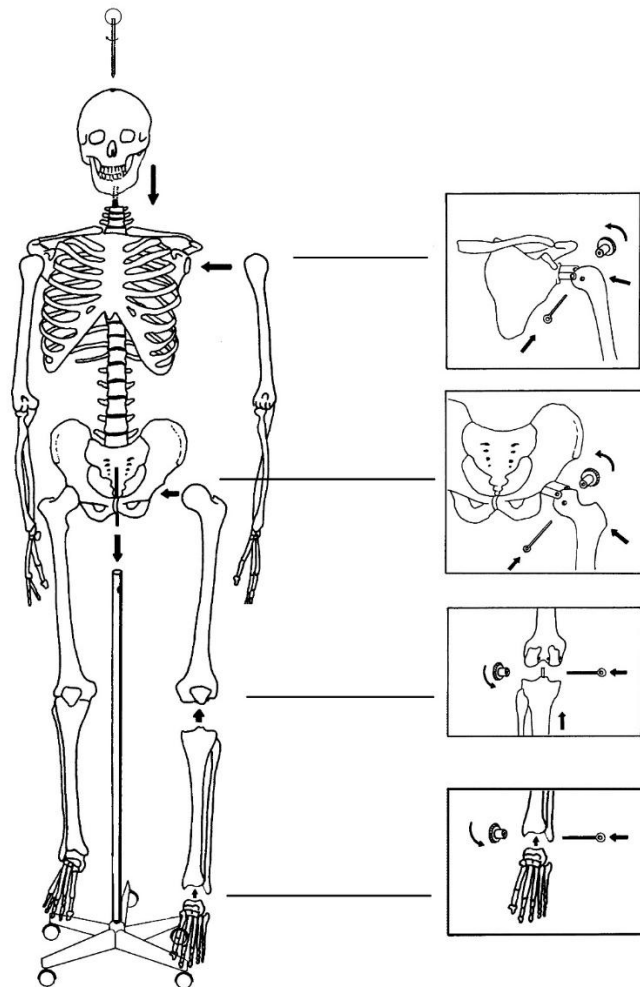
### Highlights:

- \* The main joints (elbow, shoulder, wrist, hip, knee, ankle) are movable
- \* The only one human skeleton you can find in the market-removable skull. Skull cap, arms, legs, crus, feet for study purpose.
- \* The quickest way to attach & detach arms, legs, creative design assure you no small will be lost
- \*The most detailed colorful chart
- \* A ring on the top for hanging, of course can sit on the stand of base with wheels, so you can move it around.
- \* The skeleton model can rotate on the base stand, you don't need to rotate the skeleton with base, so you can see all the details easily.
- \*Manufactured from high grade quality durable plastic material, which can be drilled, sanded, stained or painted, washed
- \* The safest skeleton in the market, no sharp metal tips exposed
- \* Superb quality from the best process and material

### Note:

Due to the property of PVC material- becomes soft when heated, so it is easy to deform during transportation in the container. If you see any deformation, you can easily correct it with your hand after heat it with a hair dryer or in 50°C hot water. This is not quality issue.

Fix Manual:



(free poster)